

PRODUCT INFORMATION PACKET

Model No: 5KH36MN3106
Catalog No: H286
1/2,1725,DP,56,1/60/115
Fan and Blower



Regal and Marathon are trademarks of Regal Beloit Corporation or one of its affiliated companies.
©2018 Regal Beloit Corporation, All Rights Reserved. MC017097E

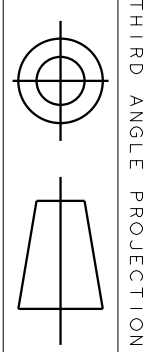
Nameplate Specifications

Output HP	1/2 Hp	Output KW	0.37 kW
Frequency	60 Hz	Voltage	115 V
Current	9.3 A	Speed	1725 rpm
Service Factor	1.25	Phase	1
Efficiency	59.5 %	Duty	Continuous
Insulation Class	B	KVA Code	N
Frame	56	Enclosure	Drip Proof
Overload Protector	N/R	Ambient Temperature	40 °C
Drive End Bearing Size	6203	Opp Drive End Bearing Size	6203
UL	Recognized	CSA	Yes
CE	N	IP Code	22

Technical Specifications

Electrical Type	Split Phase	Starting Method	SM
Poles	4	Rotation	Counterclockwise/Clockwise
Mounting	Resilient Base	Motor Orientation	ANY
Drive End Bearing	BALL	Opp Drive End Bearing	BALL
Frame Material	Rolled Steel	Overall Length	10.32 in
Frame Length	6.22 in	Shaft Diameter	0.63 in
Shaft Extension	1.88 in	Thru-bolts Extension	0
Outline Drawing	52A101910P1	Connection Diagram	52A105377AA

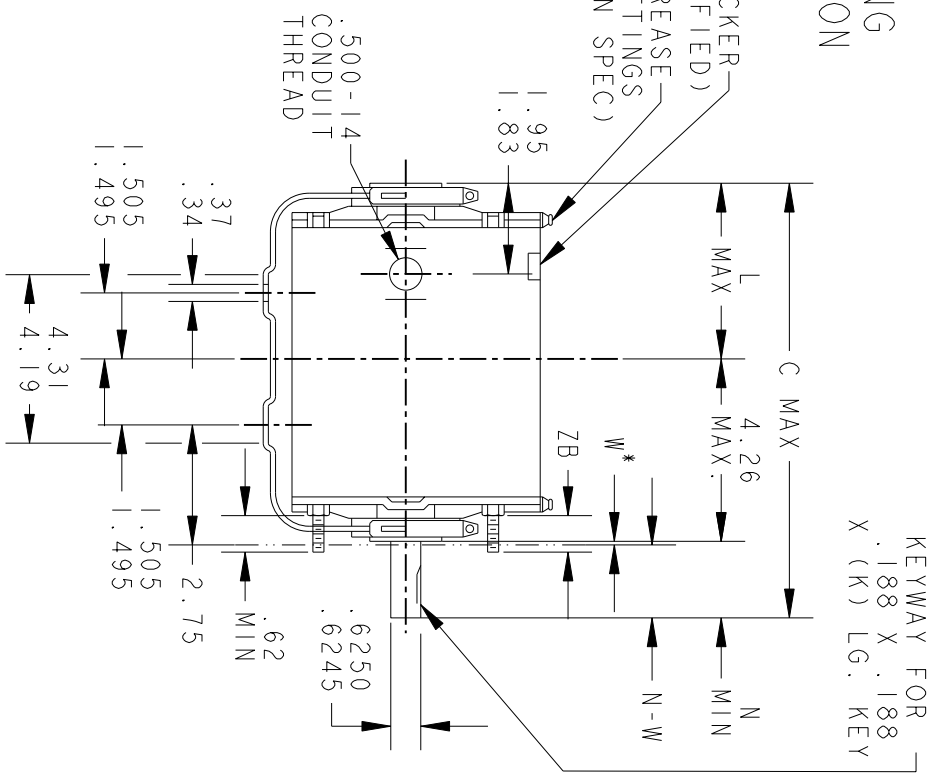
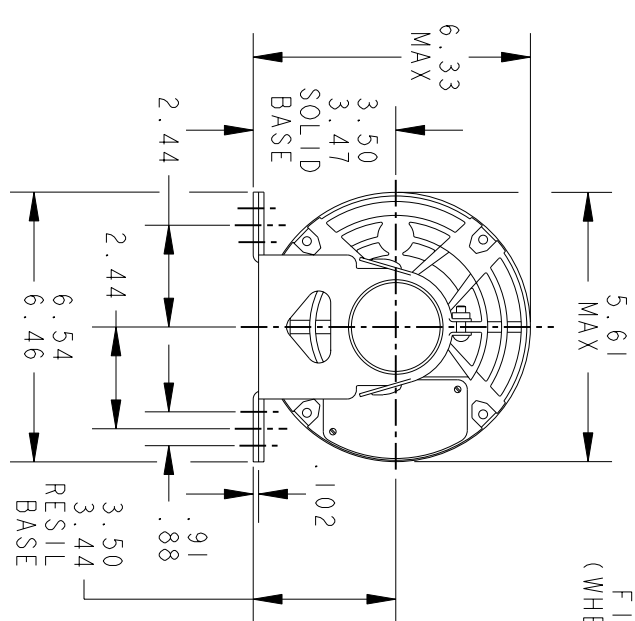
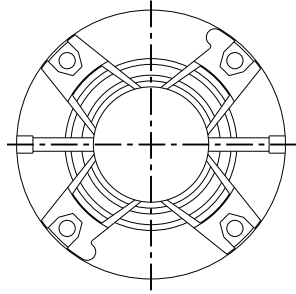
This is an uncontrolled document once printed or downloaded and is subject to change without notice. Date Created: 10/08/2018



THIRD ANGLE PROJECTION

REVISIONS		DESCRIPTION	DATE	APPROVED
11	REDRAWN NO CHANGE	T196-22390	07/10/96	MDP
12	CHG TO RBC FORMAT PER 1S05-1777		12/16/05	PRAVEEN.K

VIEW SHOWING PE VENTILATION OPENINGS



*W IS A CLEARANCE DUE TO VARIATION IN PARTS & ASSEMBLY.

PT	TYPE	GE SIZE	NEMA FR	C	K	L	N	N-W	ZB
5	KH	35	56	9.89	1.38	3.80	1.88	2.01/1.79	.55/ .52
4	KH	39	56	11.85	1.38	5.76	1.88	2.01/1.79	.55/ .52
3	KH	37	56	10.72	1.38	4.63	1.88	2.01/1.79	.55/ .52
2	KH	38	56	11.32	1.38	5.23	1.88	2.01/1.79	.55/ .52
1	KH	36	56	10.32	1.38	4.23	1.88	2.01/1.79	.55/ .52

SIGNATURES		DATE
MODEL	JPK	01/19/76
DETAIL		
CHECKED		
ENGRG		
FOR ADDITIONAL INFO REFER TO:	MFG	
APPLIED PRACTICES	QUALITY	
DIMENSIONS ARE IN INCHES	ISSUED	MDP 07/10/96
MATERIAL	SOLID MODEL:	52A101910



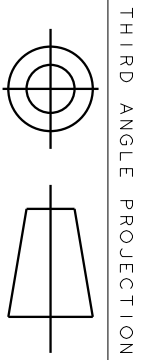
REGAL-BELOIT CORPORATION

TITLE OUTLINE

FORM N-GENERAL PURPOSE MOTOR-DRIP PROOF-SOLID OR RESIL BASE-BALL OR SLEEVE BEARING

SIZE DRAWING A 52A101910 REV 12

SCALE: 1.000 REF. No.: SHEET 1 of 1



THIRD ANGLE PROJECTION

REVISIONS

REV.	DESCRIPTION	DATE	APPROVED
1	UPDATED FORMAT	11/10/05	MAM

EITHER ROTATION - SINGLE VOLTAGE
TYPE KC, OR KH



NOTE #1 - TO REVERSE ROTATION INTERCHANGE BLACK (T5-KH OR J9-KC) AND RED (T8) LEADS.

NOTE #2 - WHEN MORE THAN ONE CAPACITOR IS USED CONNECT IN PARALLEL.

REF. DIAG. - 121A850		SWITCH (C) - 115D958AB	
CONNECTION LABEL - 52X332047			
SIGNATURES			
MODEL	M.D. PAPE	DATE	06/29/87
DETAIL			
CHECKED			
ENGRG			
MFG			
FOR ADDITIONAL INFO REFER TO:			
APPLIED PRACTICES			
DIMENSIONS ARE IN INCHES			
MATERIAL	SOLID MODEL: 52A105377AA		



REGAL-BELOLT CORPORATION

TITLE CONNECTION DIAGRAM

FME: 30 FRAME SWITCH REDESIGN

52A105377AA

REV 1

SCALE: 1.000 REF. No:

SHEET 1 of 1